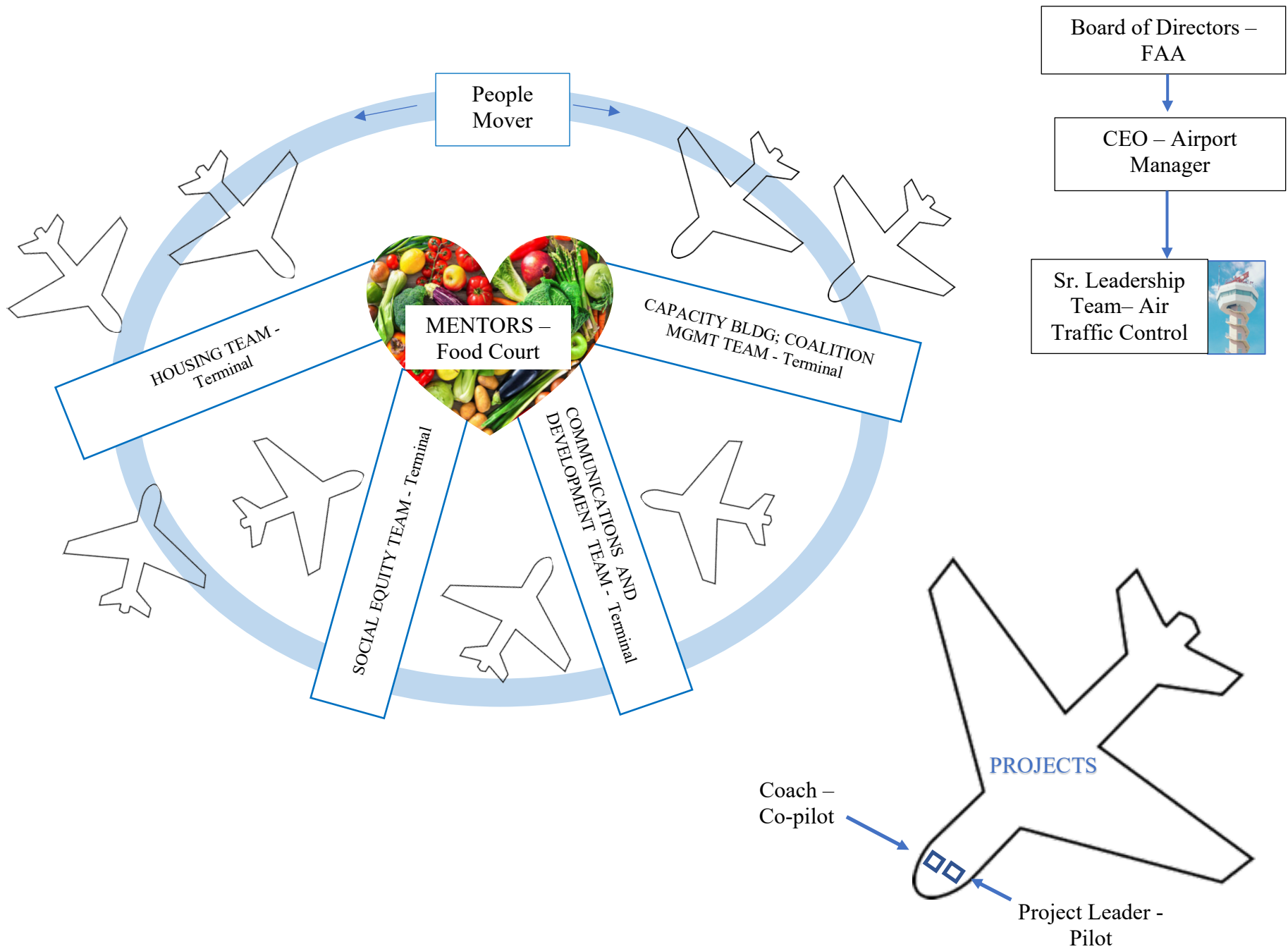


KCADV ORGANIZATIONAL STRUCTURE (aka the Airport)



- The Board of Directors (FAA) provides the governance which is high level strategy, oversight, and accountability.
- The CEO (Airport Manager) makes decisions and policy on a day-to-day basis to keep the Coalition (Airport) operational. The COO serves as the second in charge.
- The Sr. Leadership Team (Air Traffic Control) meets weekly to discuss current operations and projects and to strategize and do visioning for future growth. Decisions that affect the Coalition as a whole are often made by consensus by the Sr. Leadership Team. The staff that are part of this team are selected based on their years of service, level of expertise, judgement, and ability to serve in an advisory capacity to the CEO.
- Currently, the Sr. Leadership Team also serves as Mentors.
- Mentors are like the food court at an airport – they nourish the members of their team by providing a variety of learning, sharing, and growing choices. They provide guidance, support, and handle performance and work conduct issues.
- Each staff person is assigned to one of four Teams (terminals) based on the type of work that staff person will primarily be doing. Teams are “hubs” for strategic pillars/major topical areas. Teams meet to discuss current projects and potential new projects.
- A Project Leader “pilots” the activities and outcomes of a specific project. They are the person responsible for “take off” and “landing” of the project by ensuring tasks, reports and deliverables are accomplished.
- Coaches may be asked to serve on a project. Any staff person with expertise in an area that would be beneficial to the success of the project may serve as the “co-pilot.” Serving as a coach indicates a staff person’s willingness to grow and expand on their current roles and responsibilities.
- ALL staff work on projects (passengers on the planes). They may fly on the planes most likely to take off and land from their home terminal (projects most related to their Team), but they can also hop on flights from other terminals based on their interest in the project. Often, staff have their time/effort split among a variety of projects in more than one terminal.
- Certain staff positions/areas of responsibility serve to keep all Teams (terminals) and Projects (planes) operational. Staff in finance and budget, for example, will meet frequently with all teams and project leaders to ensure they have the tools and resources to accomplish their projects as well as to stay within budget. They take the People Mover to help them move quickly between terminals and planes.

Angela Yannelli

Chief Executive Officer

Sr. Leadership Team

Isela Arras

Chief Operating Officer

Mary (Meg) Savage

Chief Legal Officer

Andrea Miller

Sr. Leadership – Housing Policy and Programming

Housing Policy and Programming Team

Andrea Miller

Mentor

Latosha (Tosha) Peyton-Jarber

Program Specialist, Housing Policy and Programming

Samantha Dearing

Program Specialist, Housing Policy and Programming

Carol Foy

Program Specialist, Housing Policy and Programming

* TBD

Sr. Program Specialist, Housing Policy and Programming

Social Equity Team

Meg Savage

Mentor

* Liz Epperson

Sr. Program Specialist, Social Equity

* Olivia Spradlin

Sr. Program Specialist, Social Equity

* Katie French

Sr. Program Specialist, Social Equity

* Beth Workman

Program Specialist, Social Equity

TBD

Program Specialist, Social Equity

Communications and Development Team

Isela Arras

Mentor

* TBD

Sr. Program Specialist, Communications and Development

Ericka Harney

Consultant, Communications and Development

Lauren Bunch

VISTA, Communications and Development

Capacity Building and Coalition Management

Isela Arras

Mentor

* Lisa Gabbard

Leadership, Capacity Building and Coalition Management

* Amy Conley

Sr. Program Specialist, Budget and Finance

* Emma Dickinson

Program Specialist, Capacity Building and Coalition Management

* Diane Robinson

Program Specialist, Capacity Building and Coalition Management

* Jean Budden

Program Specialist, Budget and Finance

Simone Marx

AmeriCorps, Capacity Building and Coalition Management

* Indicates a Project Leader